

DLRGROUP

QUALIFICATIONS
FEDERAL - NON-MILITARY



Who We Are

 **1600+**
Employee-Owners

We're an integrated design firm. Our promise is to elevate the human experience through design. This inspires a culture of design and fuels the work we do around the world. We are 100% employee-owned: every employee is literally invested in our clients' success. At the core of our firm are interdisciplinary employee-owner teams, engaged with all project life-cycle stakeholders. These teams champion true collaboration, open information sharing, shared risk and reward, value-based decision making, and proficient use of technology to elevate design.

 **1966**
Year Established

DLR Group is transforming Federal design.

DLR Group elevates public service through design that helps the federal government fulfill the mission unique to each agency. We integrate solutions throughout planning, design, and construction to deliver sustainable, smart buildings to maximize real estate assets.

 **33**
Offices Worldwide

With nearly six decades of experience in the planning and design of government projects of all magnitudes, DLR Group has completed more than 700 million SF of government facilities that enhance their surroundings and contribute to their communities. Our work for government entities includes architecture and engineering services on new construction, addition, renovation, planning, programming, space planning, historic preservation, restoration, sustainability, commissioning, high performance and energy modeling.

 **#1**
*“Government Design Firm”
Building Design
WA100 | 2024*

Locations

Austin	Dubai	Nashville	San Francisco
Charlotte	Durham	New York	Seattle
Chicago	Honolulu	Omaha	Shanghai
Cleveland	Houston	Orlando	Sonoma
Colorado Springs	Kansas City	Phoenix	Tucson
Columbus	Las Vegas	Portland	Washington, D.C.
Dallas	Lincoln	Riverside	
Denver	Los Angeles	Sacramento	
Des Moines	Minneapolis	San Diego	



Federal Agencies Served

Architect of the Capitol
Army National Guard
Bureau of Indian Affairs
Federal Bureau of Investigation
Federal Bureau of Prisons
Federal Emergency Management Agency
Federal Reserve System
Naval Facilities Engineering Systems Command
Smithsonian Institution
U.S. Air Force
U.S. Air Force Academy
U.S. Army Corps of Engineers
U.S. Department of Defense
U.S. Department of Homeland Security
U.S. Department of Justice
U.S. Department of Labor
U.S. Department of State
Overseas Building Operations
U.S. Department of Veterans Affairs
U.S. Environmental Protection Agency
U.S. General Services Administration
U.S. Social Security Administration
U.S. Space Force
United States Postal Service



*Delivering secure and resilient
buildings for the well-being of
individuals and agencies, today and
tomorrow, at home and abroad.*

Government Commitment

There is a very human aspect of buildings beyond form and function, a sense of place that is fundamental to architectural design... particularly for government structures. Buildings shape human experience and how people feel. A government building's effect on its community is palpable. It must be inviting and vital to day-to-day community life, a hub that is gracefully connected to the streetscape and other venues around it. At the same time, it must be timeless, evoking dignity and establishing a legacy befitting a landmark of enduring stability and security for the community, now and into the future.

DLR Group addresses how best to create that sense of place on every project it takes on, with the same importance we place in achieving programmatic goals and integrating sustainable design elements.

The quality of the environment—natural light, apparent density, color, texture and furnishings—directly impact the behavior and productivity of staff, and the enjoyment of the public. We design to create a sense of ownership and adapt the building to the community's unique aspirations and identity, so people are empowered and excited to be in the places they inhabit in their daily lives.

Placemaking requires designing a space that encourages meaningful social interactions. This supersedes any attempt to create iconic architecture or use high design architectural styles.

While our designs meld the history of the community, the physical environment, and the vision for the future, we also carefully consider how the building will contribute as a healthy, vibrant workplace or destination.

Some specialized services that we provide to government agencies include:

- Historic Preservation
- Seismic Design
- Physical & Technical Security
- Sensitive Compartmented Information Facility
- Master Planning
- Design-Build
- Design Excellence
- Lab Design
- Overseas Facility Design
- Sustainability Consulting
- Mission-Critical Facilities
- Building Optimization
- High-Performance Design
- Energy Services
- Interiors
- Experiential Graphic Design
- Acoustics
- Specialty Lighting Design

Our Partnerships

We are a trusted partner—delivering multiple projects in multiple locations—for dozens of firms, including Fortune 500s and government agencies. Earning our partners' loyalty is something we take seriously: 80 percent of our work comes from repeat clients.



Global Sustainability Leadership

Environmental Stewardship is a DLR Group core value.

DLR Group champions sustainability and Environmental Stewardship is a core value of the firm. DLR Group is an early adopter of the Architecture 2030 Challenge and an initial signatory of the AIA 2030 Commitment. Our AIA 2030 Commitment reporting consistently exceeds the industry average of reporting firms.

DLR Group was a driving force behind the signing of the China Accord in Shenyang, China, in 2015. The China Accord champions the unprecedented opportunity available to China during the next 20 years to create healthy, resilient, and integrated regional infrastructure, cities, and buildings as models of economic and urban sustainability.

We encourage and support LEED, Green Globe, and WELL Building accreditation of our design professionals. Accomplishments in sustainable design include awards and recognitions from the AIA Committee on the Environment, net-zero ready facilities; LEED accreditations of projects at all certification levels in diverse climate and project types; and ongoing research and development programs to advance sustainable design solutions.

Wayne N. Aspinall Federal Building and U.S. Courthouse / Platinum +
AIA COTE Top 10
Grand Junction, CO

Wayne L. Morse U.S. Courthouse / Gold
Eugene, OR

Division Headquarters Band Training Facility / Gold
Fort Carson, CO

Soldier Family Assistance Center / Gold
Fort Carson, CO

George C. Young Federal Building Renovation / Gold
Orlando, FL

Calaveras County New San Andreas Courthouse / Gold
San Andreas, CA

Cleveland Clinic Twinsburg Family Health and Surgery Center / Gold
Twinsburg, OH

Latvia United States Embassy / Silver
Riga, Latvia

Smithsonian Institution American Art Museum's Renwick Gallery / Silver +
AIA COTE Top 10
Washington, D.C.

Everett Municipal Court Replacement / Silver
Everett, WA

Los Angeles County Campus Kilpatrick Juvenile Facility / Silver
Malibu, CA

Pueblo County Judicial Center / Silver
Pueblo, CO

Warrior in Transition Complex / Silver
Fort Carson, CO

Evans Army Hospital Renovation / Silver
Fort Carson, CO

Southern Regional Crime Laboratory / Silver
Tucson, AZ

U.S. Consulate, Jeddah / Silver
Jeddah, Kingdom of Saudi Arabia

270+

LEED PROJECTS

8 Platinum
65 Gold
90 Silver
31 Certified
79 Pending

270+

LEED ACCREDITED PROFESSIONALS

70+

NET ZERO READY PROJECTS

Federal Courthouses





GEORGE C. YOUNG
UNITED STATES FEDERAL BUILDING
AND COURTHOUSE
405 WEST YORK STREET

Wayne N. Aspinall Federal Building and U.S. Courthouse

Grand Junction, CO

41,600 SF

LEED Platinum

AIA COTE Top Ten

A comprehensive renovation of the Wayne Aspinall Federal Building focused on restoring and preserving historic character while employing a range of modern systems and updates for occupant comfort and energy use reduction. The four-story building houses numerous professional federal agency office tenants, who now benefit from the return of the original high ceilings, enhanced daylighting, and increased openness made possible by an innovative reconfiguration of non-original fire separation assemblies.





George C. Young Federal Building Renovation

| Orlando, FL

| 202,000 SF

The George C. Young Federal Building and U.S. Courthouse needed a strategic modernization to serve the evolving needs of its constituents and meet more stringent code and security standards. DLR Group's design creates a new, iconic architectural identity for the building in alignment with its existing character. Interior renovations establish a new, dignified procession through clearly defined and organized spaces.



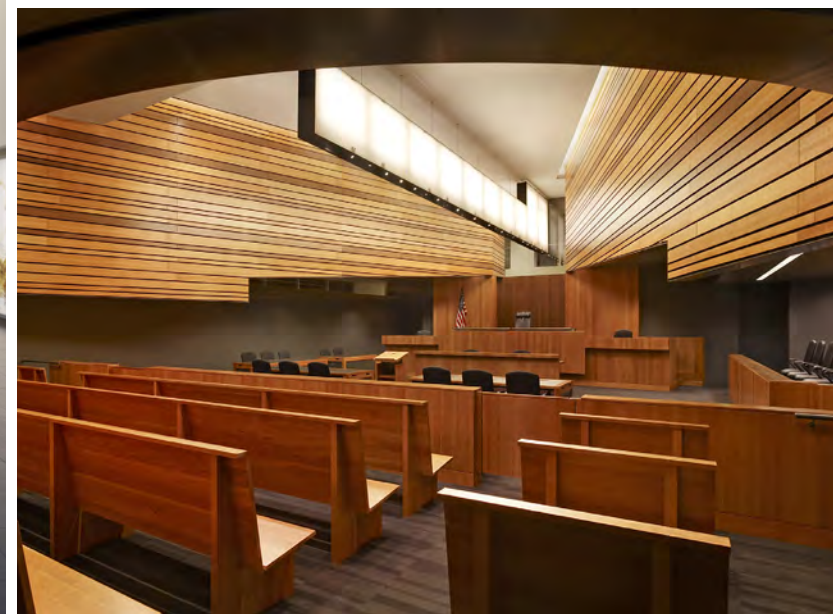


Wayne L. Morse U.S. Courthouse

Eugene, OR

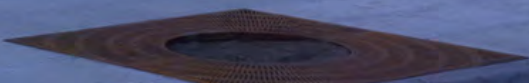
272,300 SF
LEED Gold

The Wayne L. Morse United States Courthouse represents a new generation of federal courthouses that are redefining the architectural values and expression of the Federal Judicial Branch. This DLR Group / Morphosis collaboration engages visitors in a symbolic narrative of movement beginning at a classic entry stair and portico, past a feature waterfall, into a soaring sunlit atrium space and, ultimately, up a formal grand staircase to the courtroom level.





WAYNE LYMAN MORSE



James A. Walsh U.S. Courthouse

Tucson, AZ

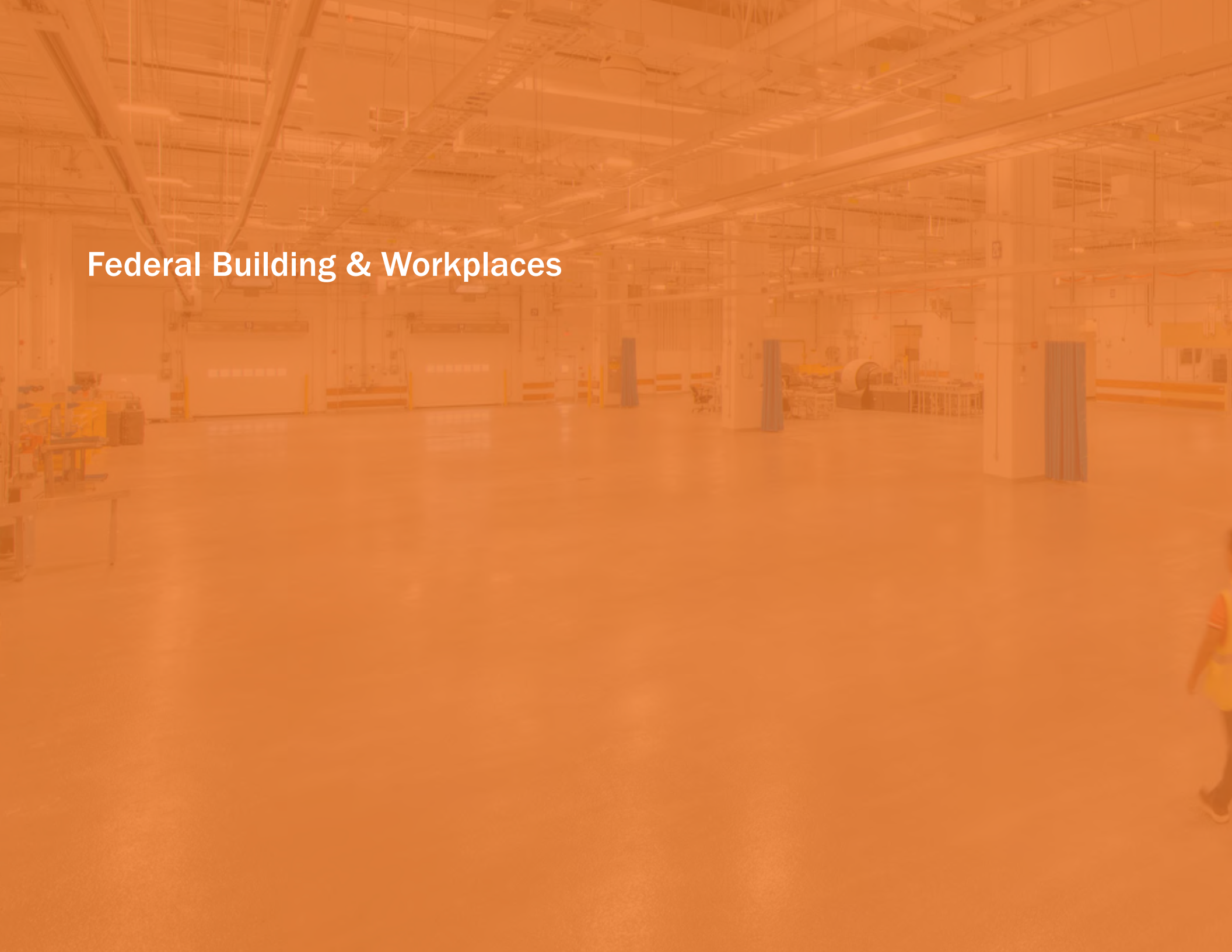
56,250 SF

The rehabilitation of the Walsh U.S. Courthouse demonstrates the General Services Administration's (GSA) reinvestment in the nation's historic public building legacy. DLR Group's renovation restores character-defining elements while responding to ever-increasing space needs and stringent security requirements for new use by the U.S. Bankruptcy Court and the U.S. Trustee. On the exterior, new blast resistant windows replicate the building's original Neoclassical appearance while subtle adjustments to the sidewalk and street alignments eliminate the need for intrusive vehicle barriers.





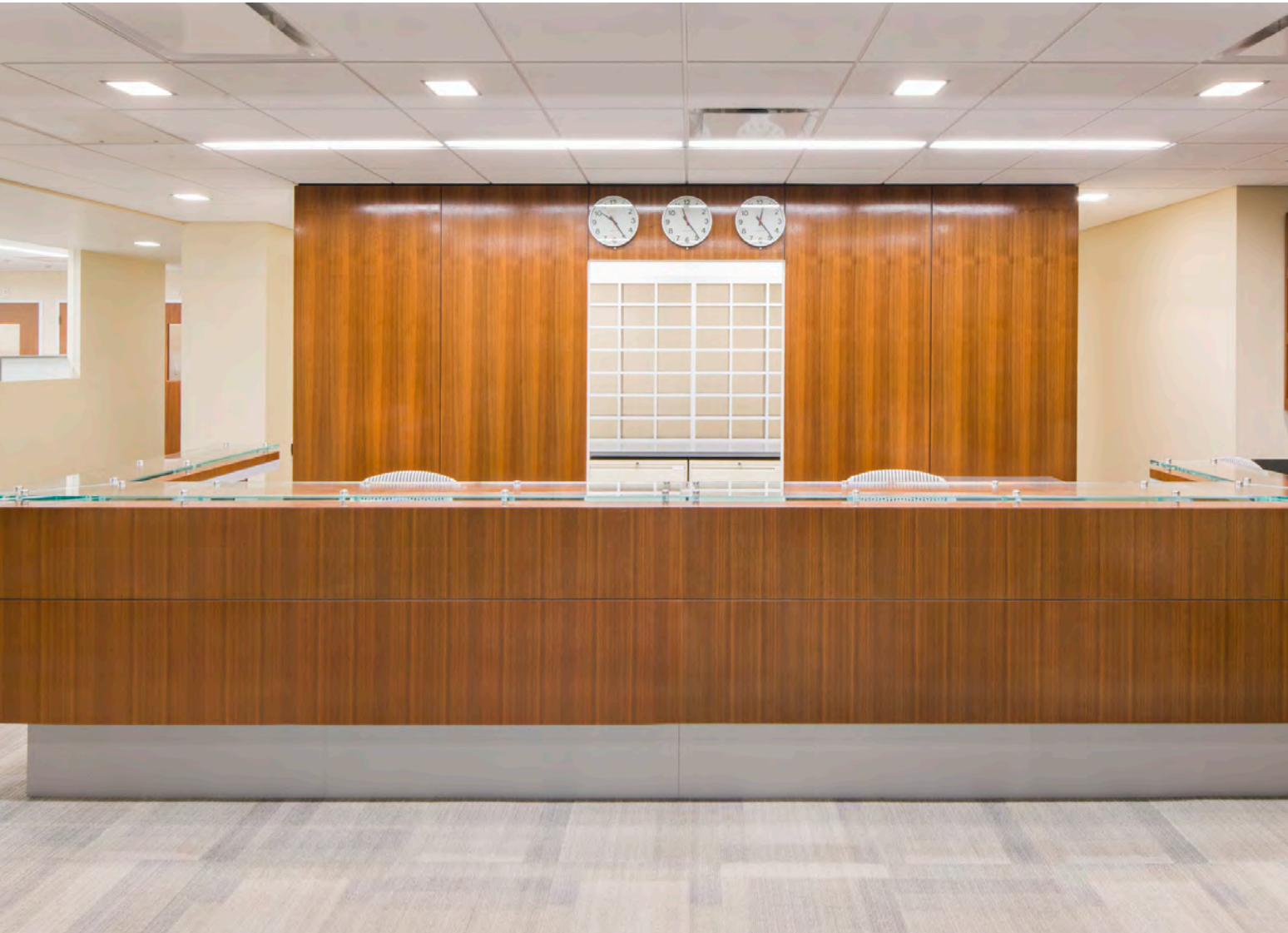
Federal Building & Workplaces



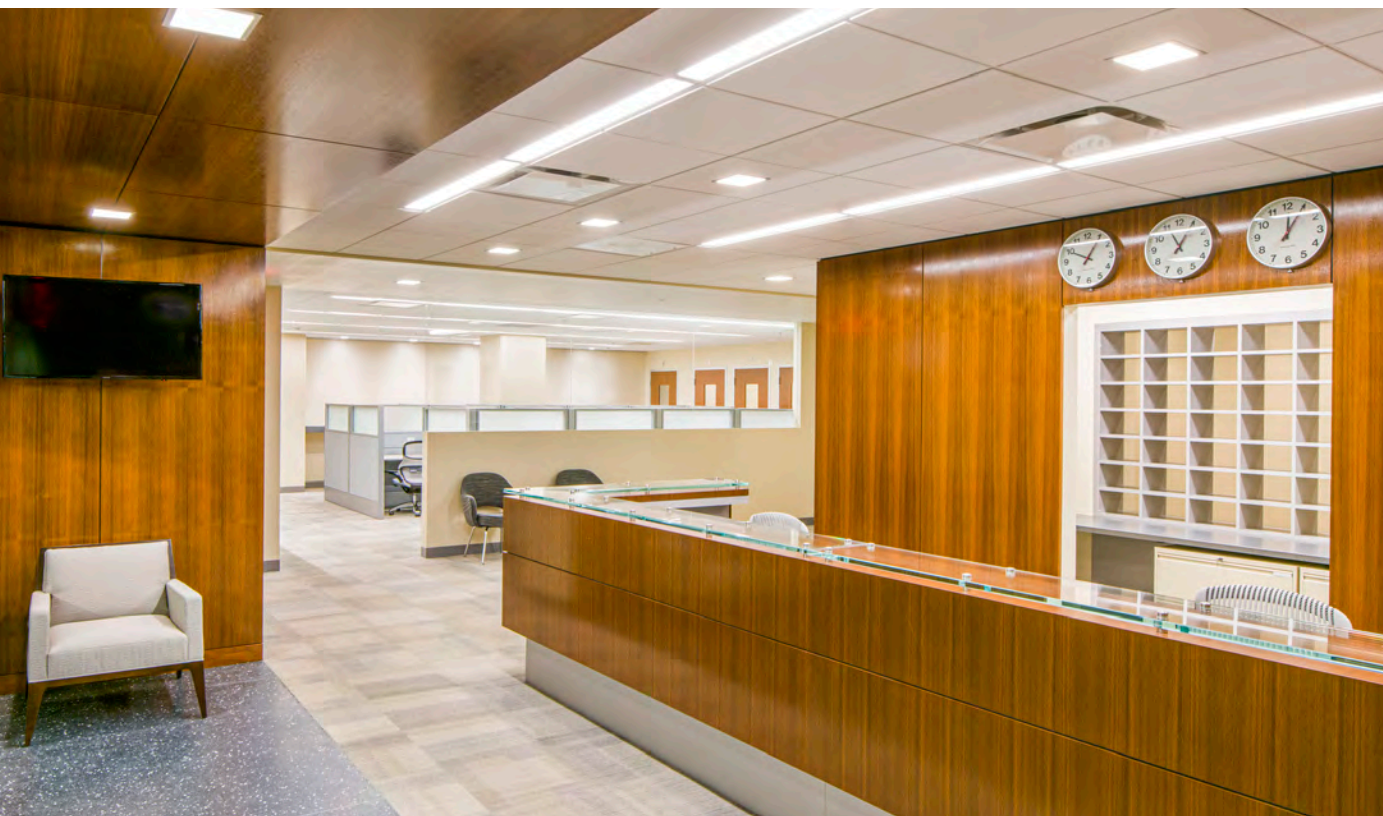
GSA Harry S. Truman Federal Building

| Washington, D.C.

| 290,500 SF



The Federal agency occupying this office building has fluctuating, ongoing and unpredictable interior space needs, necessitating flexible functional space planning solutions. DLR Group's design upgrades office space, conference facilities, joint use space, public areas, and critical mission related facilities to contemporary standards. As part of the programming and space planning phase, DLR Group developed more efficient, modular space standards applied to a large portion of the building.



Smithsonian American Art Museum Renwick Gallery

Washington, D.C.

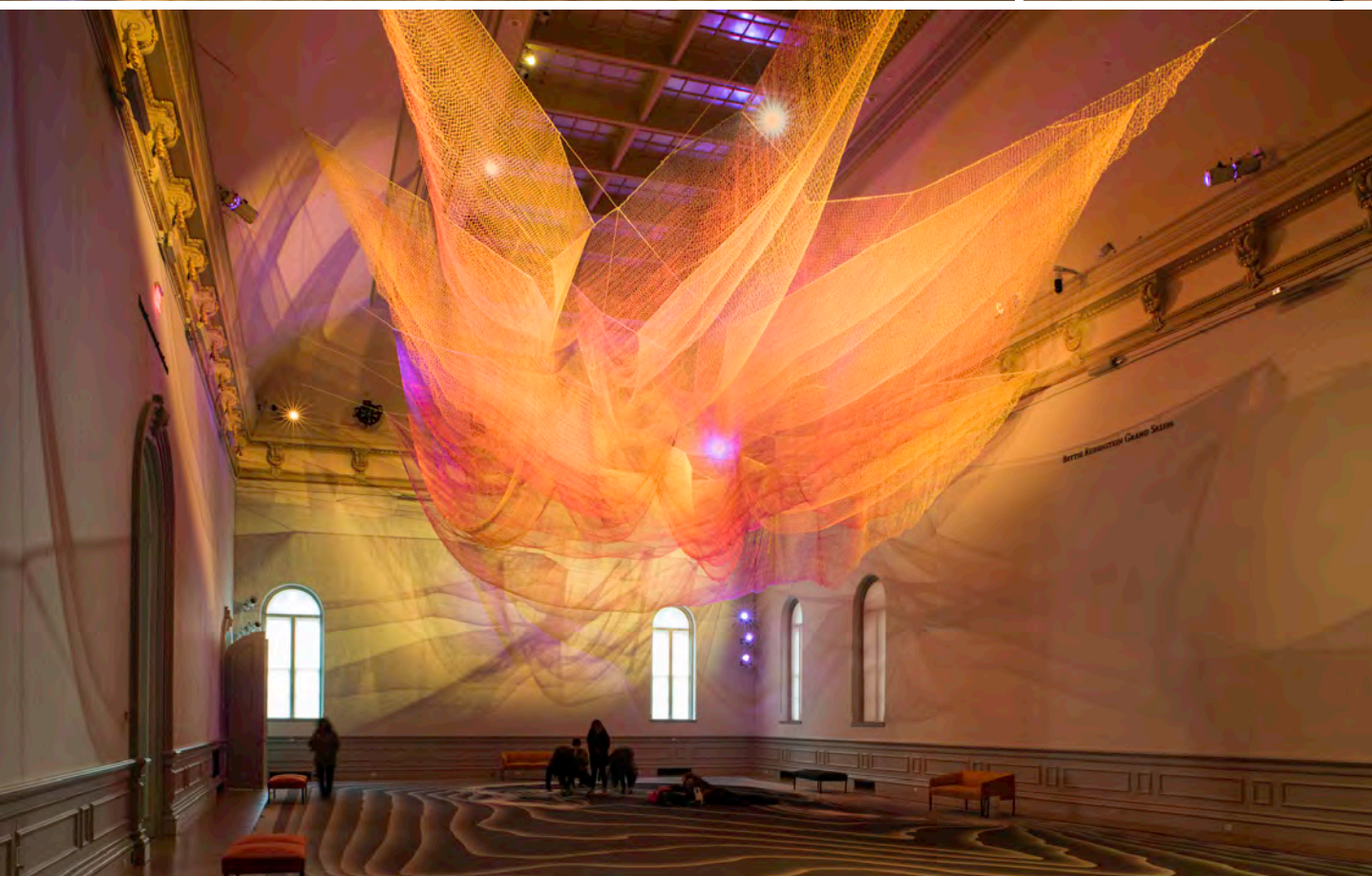
46,600 SF

LEED Silver

AIA COTE Top Ten

As the first purpose-built art museum in America and a principal structure in the Smithsonian Institution portfolio, the Renwick Gallery of the Smithsonian American Art Museum holds significant value for American history. DLR Group's major renovation of The Renwick Gallery preserves and respects the historic character of the National Historic Landmark building, while modernizing infrastructure and systems with state-of-the-art sustainable and energy-efficient technologies.





NIST Building 1, Wing 5 Renovation

Boulder, CO

79,110 SF
LEED Gold

Scientists working at NIST Building 1, also known as the Central Radio Propagation Laboratory, conduct highly controlled, world-class research. DLR Group's renovation of one of the nation's oldest physical science laboratories transforms Wing 5 of Building 1 into a vibrant, wellness-centered workplace that competes at a global level by providing 16 new energy-efficient laboratories, modern offices, and dedicated outdoor spaces. Functional aspects are enhanced by providing dedicated lab support space and upgrading programmatic and mechanical layouts, all while honoring the historic character of the building.





Architect of the Capitol (AOC) On-Call IDIQ Services

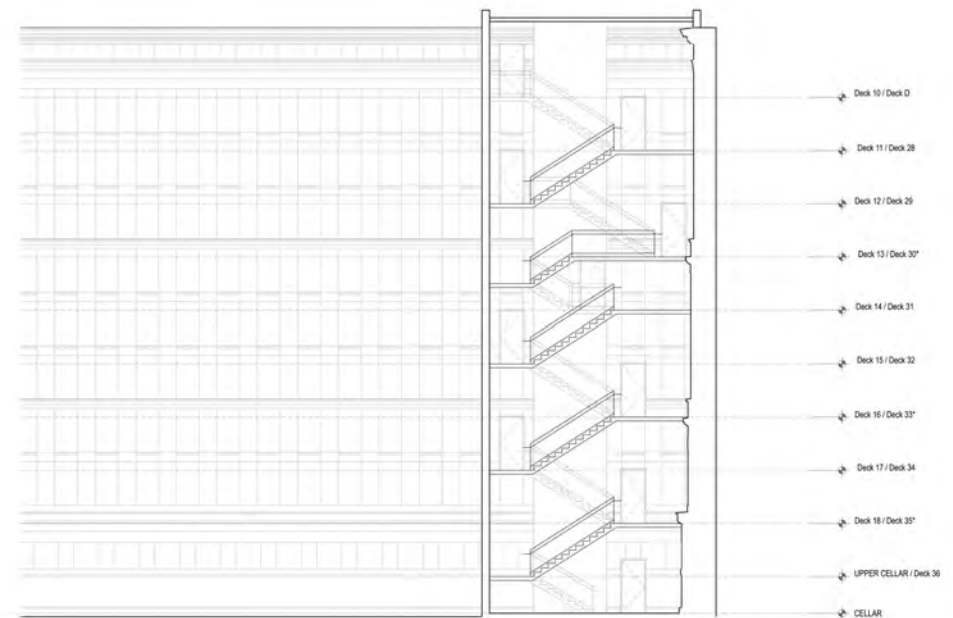
| Washington, D.C.

Through an on-call IDIQ contract for architecture, engineering, and technical services, DLR Group has designed a number of improvement projects helping to achieve the AOC's overall mission to serve, preserve, and inspire. The projects at the Library of Congress (LOC), the Thomas Jefferson Building, the U.S. Capitol Visitors Center, the U.S. Capitol Building, and Capitol Power Plant aim to enhance or upgrade existing systems and structures while providing minimal disruption to the buildings' occupants, operations, and historic fabric. Many of these projects were designed to be implemented in phases to maintain operations throughout construction.





SW Courtyard Renovation



Thomas Jefferson Building
New Exit Stair F



SW Courtyard Renovation



LOC Conservation Lab Modernization

GSA 5c - FBI Regional Office TI

Fredericksburg, VA

51,200 SF
LEED Silver

DLR Group completed planning and interior design for the tenant fit-out project for the new Federal Bureau of Investigation regional office to house up to 500 employees. The 10-acre site features parking for 245 cars, an elliptical running/walking track and other amenities geared to promote physical fitness among employees as well as ecologically sound design. The interior office spaces feature a secure reception area with glass accents and terrazzo flooring, small offices, meeting and conference areas, and two large open work areas.

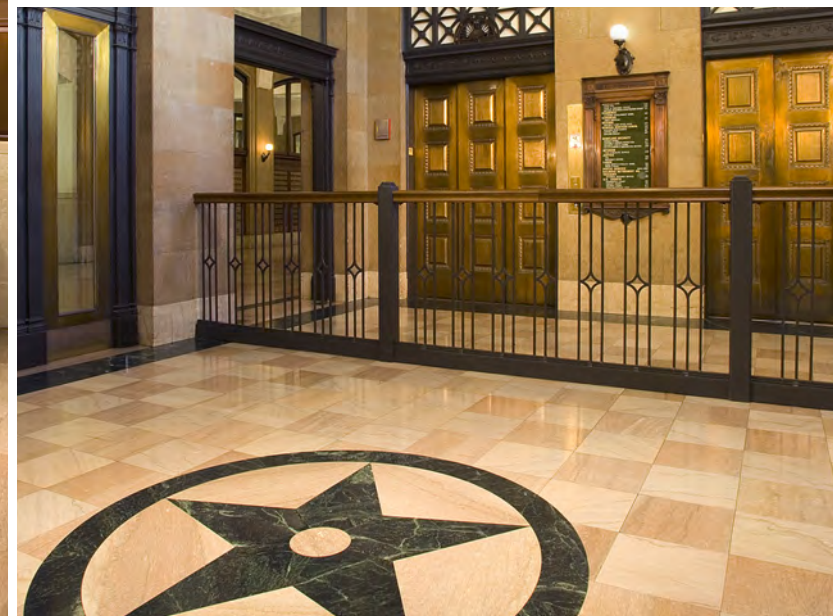


GSA Duluth U.S. Postal Service Lobby Restoration

Duluth, MN

2,200 SF

DLR Group provided engineering and architectural services for seven projects within the Duluth Federal Building and U.S. Courthouse. Built in 1930, the building needed general restorations and security improvements. The Postal Lobby renovations, a major component of the project, are part of the GSA First Impressions initiative. This project includes addition of a new business center, removal of lobby clutter, incorporation of a security screening station, and general restoration of the building lobby.



GSA TSA Innovation Test Bed Facility (TSIF)

Washington, DC

24,091 SF

DLR Group's design for an environmentally controlled space includes HVAC system, external wall/doors insulation, hazardous fume exhaust system improvements, full space coverage with an overhead busway electrical grid and improvements to existing overhead light to LED service for the ITB project space area. GSA contracted DLR Group for additional design services for a Rack Room and storage area. The addition of the Rack Room to serve 16 cabinets also included a new CRAC unit, more electrical work, and additional telecommunications work to provide more flexibility for the users' mission.





Environmental Protection Agency - Region 8 Service Center

| Denver, CO

| 4,600 SF

For this new space in their new Region 8 Headquarters Facility, the EPA wanted to showcase not only the sustainable features of the building, but also their forward thinking characteristics. DLR Group's design delivers on those goals and more in a highly sustainable, high-tech, welcoming and changeable environment for their staff and guests. Materials, systems, and furnishings clearly demonstrate the value and capacity of sustainable design choices for both beauty and practicality.







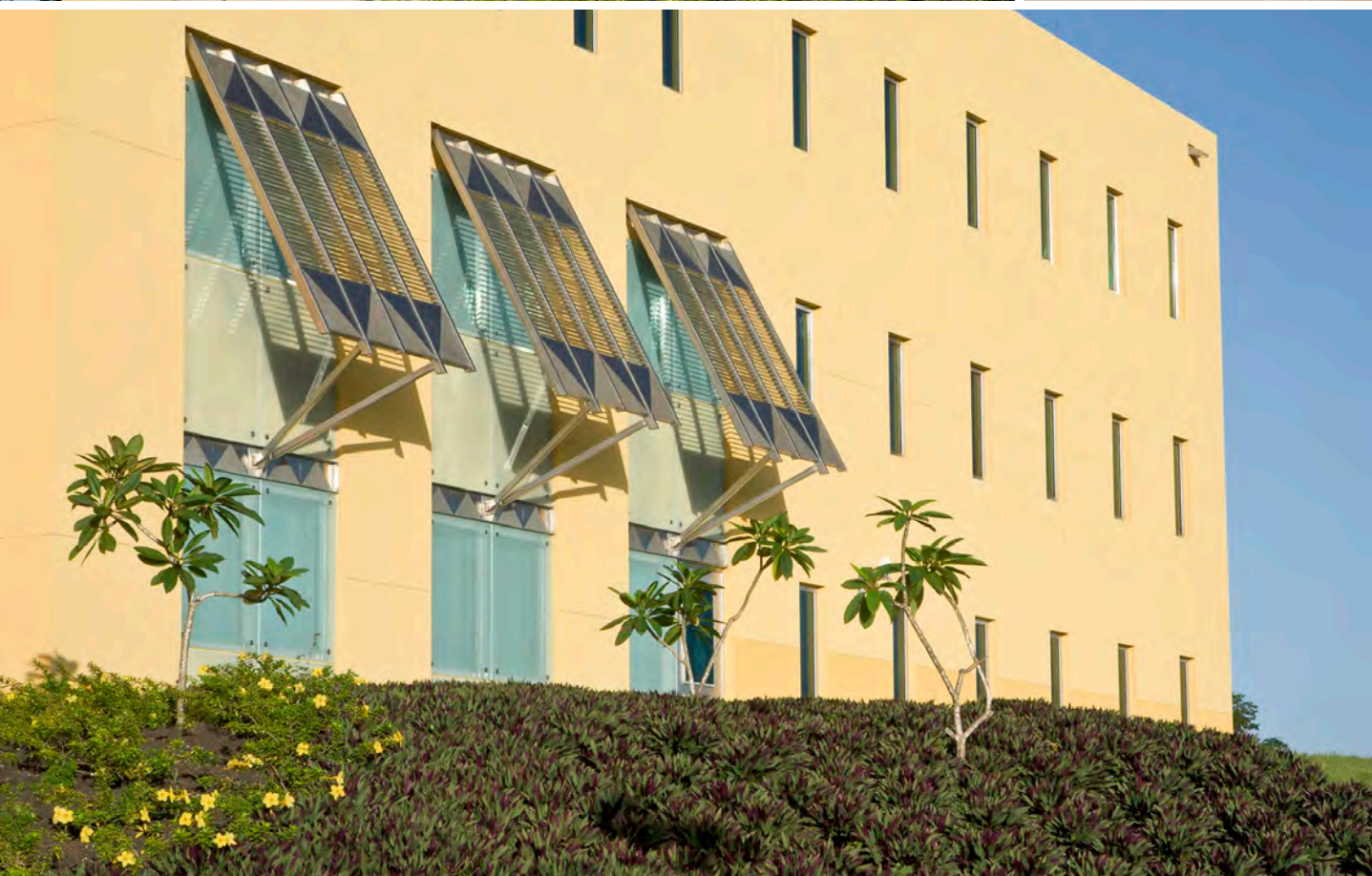
U.S. Embassy, Bridgetown

| Bridgetown, Barbados

| 86,000 SF



The U.S. Department of State tasked DLR Group with the renovation of an existing five-story office building shell into the new home of the U.S. Embassy campus. Rather than emulate the older civic buildings of Barbados, exterior design elements are derived from pre-colonial island structures. Architectural components, such as bright colors to differentiate scale and volume as well as deep shading devices to protect against the tropical sun, are incorporated to form a welcoming and graceful American diplomatic presence.



U.S. Consulate, Surabaya

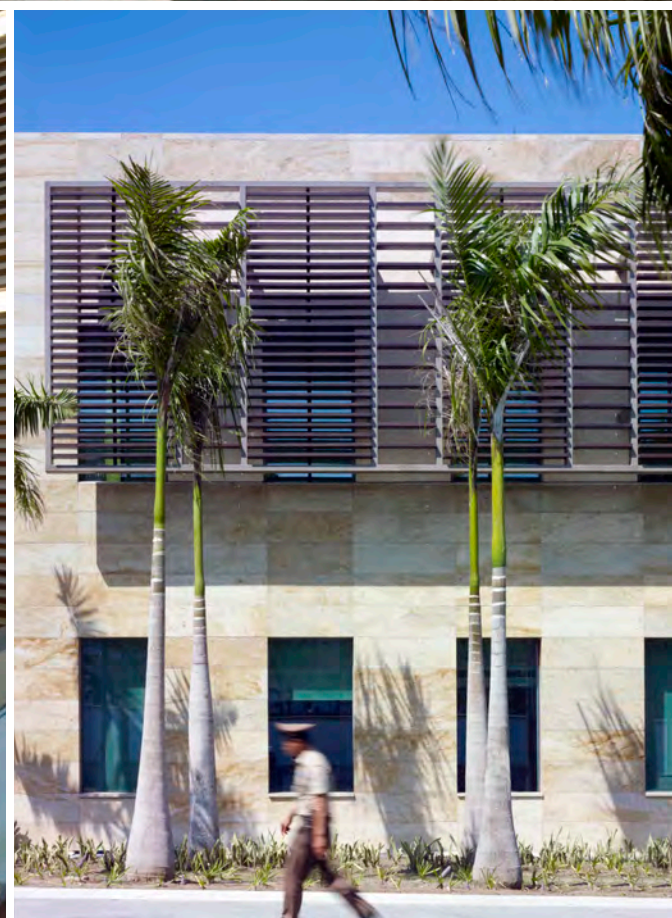
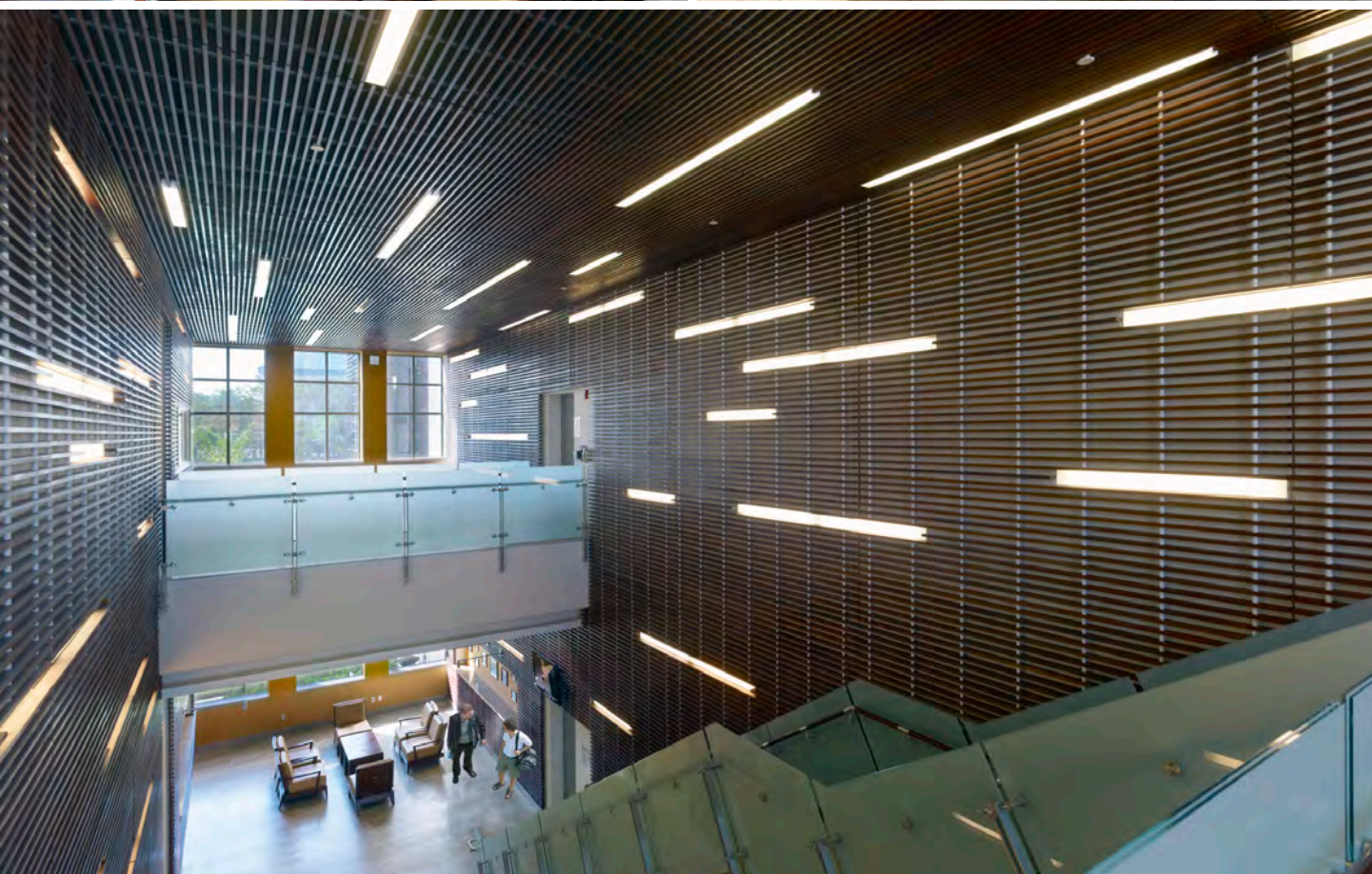
Jawa Timur, Indonesia

59,400 SF

LEED Silver

The influence of various cultures, religions, and colonial occupation in Surabaya are evident in the built forms of this coastal city on the Indonesian island of Java. In an effort to emulate this unique contextual ecosystem, DLR Group's design team drew inspiration from indigenous temples and other ancient and sacred gathering spaces. The resulting design established a U.S. Consulate Complex that successfully represents a cultural bridge between local context and a 21st century American ethos.





U.S. Embassy, Bishkek

Bishkek, Kyrgyzstan

150,000 SF
LEED Silver



The US Embassy in Bishkek was designed to reflect a 21st century partnership and US diplomatic ideals. DLR Group's design of the new facility reflects the US commitment to a close and cooperative relationship with the Kyrgyz Government and the people. Sustainable features include a cistern to collect rainwater that is used to flush toilets throughout the building.



U.S. Embassy, Libreville

| Libreville, Gabon

| 59,000 SF

The U.S. State Department requires embassies to symbolize a respect for, and integration of, local culture while serving as a tangible presence of the United States abroad. In Libreville, DLR Group's design takes inspiration from the local decorative art styles of contrasting geometric patterns of light and dark to develop a subtle, yet modern interpretation of this aesthetic. In keeping with the character of most modern buildings in Gabon, the exterior palette maintains a light-colored exterior.





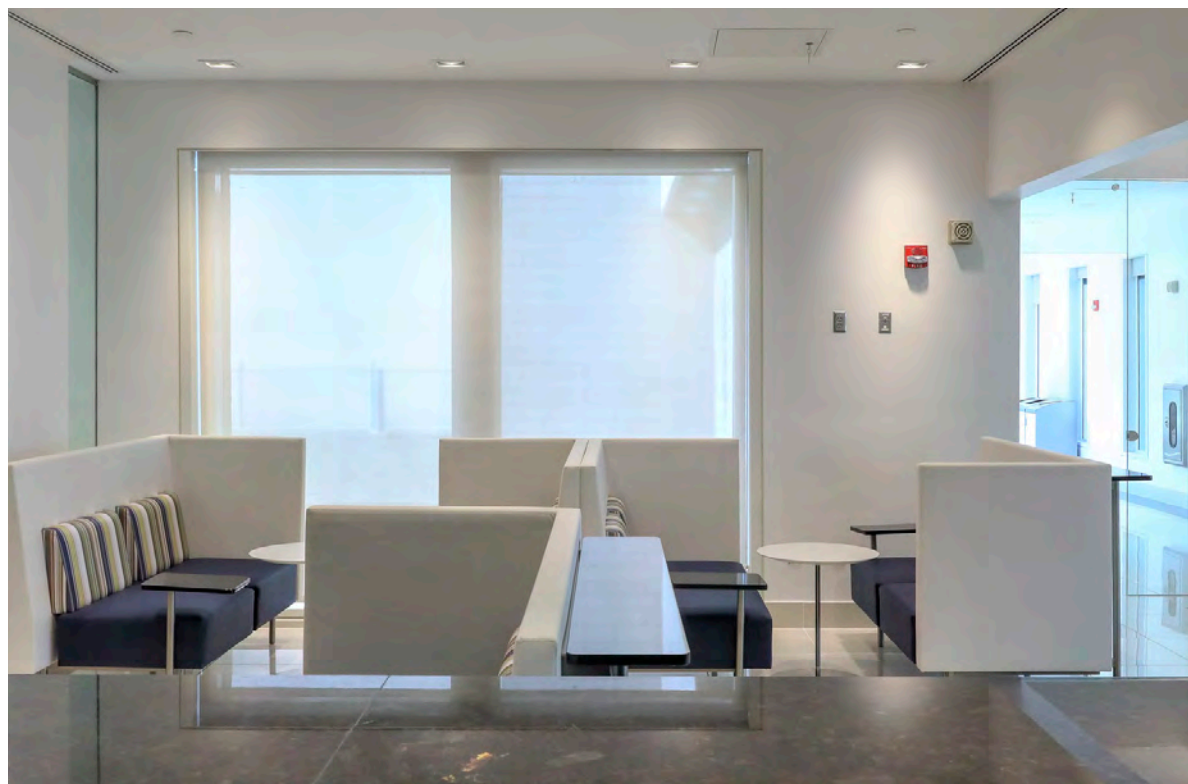
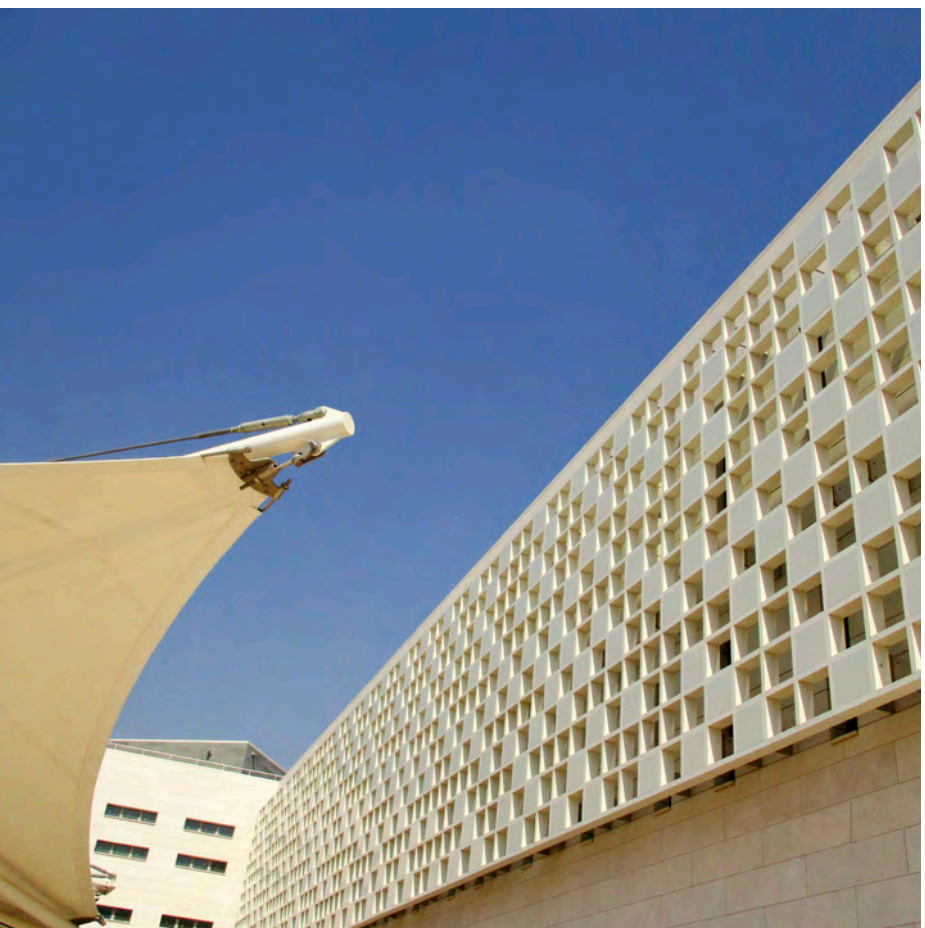
U.S. Consulate, Jeddah

Jeddah, Kingdom of Saudi Arabia

87,300 SF
LEED Silver



The site for the new US Consulate Compound is located on a 60,000 square meter campus in the Al-Nahda district within northern Jeddah, Saudi Arabia. DLR Group's design reflects the local architecture with large canopies and traditional design elements. The site is organized into public, private, and office or service access zones, separated by structured or landscaped delineations. Landscaping throughout the campus is indigenous, endemic and well adapted to the site, including plantings that are tolerant of the local climate and recognized for low water requirements.



U.S. Embassy, Juba

Juba, South Sudan

14,500 SF Chancery Office
24,000 SF Staff Diplomatic Housing

The U.S. State Department, Bureau of Overseas Buildings Operations contracted with DLR Group and Caddell Construction in a Design-Build partnership to deliver a new embassy compound in Juba, South Sudan. DLR Group's design brings together multiple buildings and functions into a cohesive 19-acre campus serving 262 embassy staff members. The new compound will be self-reliant for energy, water and sanitation as there is no viable infrastructure in place in Juba to support the new diplomatic mission.





Sustainability

Meeting the
Climate Challenge

Today, more than ever, it is essential to deliver sustainable designs with effective client-focused outcomes that exponentially impact our people, our communities, and our planet. Imagine a world where considerations about the built environment include behavioral awareness, resource conservation, human health, community health, and even our ecological future.

As a design firm, we live out our core value of environmental stewardship through building design and planning solutions. Thinking bigger and further in 2024 about sustainability starts with holding ourselves accountable. This is the reason we commit to work that aligns with goals of the industry including the Architecture 2030 Challenge, the China Accord the A&D Material Pledge, the SE2050 Challenge, and MEP 2040. More than just thoughts on paper, it's the way we do business as we help clients achieve their energy, environmental, and ESG goals. In addition, in 2023 we signed the Urban Land Institute's Commitment to Health and Equity in the Built Environment.



*3.9M metric tons of GHG avoided in FY2023 alone.**

Our sustainable designs in 2023 translated into energy and environmental savings in these ways:



490,000
*Homes Powered
in One Year*



860,000
*Passenger Vehicles
Removed from Roads*



4,650,000
*Acres of
Forest*

Raise the Bar

The average reduction target of predicted energy use for qualifying projects of the DLR Group design portfolio with performance data has consistently exceeded the national peer group average. In FY23, our integrated designs generated a 50 percent energy reduction* compared to average buildings.

*GHG emissions are estimated using national average fuel ratio for energy use in buildings and EPA's Power Profiler Tool.

Federal Leadership



Michael D. Huffstetler

LEED AP, F.SAME | Federal Programs Leader

Michael facilitates the successful delivery of programs and projects that serve and support our military branches and the needs of veterans. He brings 30+ years of government experience as well as prior leadership experience in A/E/C operations across CONUS and OCONUS environments.

mhuffstetler@dlrgroup.com



Emmett Ahearn

AIA | Federal Client Leader, Principal

Emmett has a proven track record of cultivating relationships with clients such as the GSA and the FBI and is a LEED sustainability advocate. He prioritizes the federal workforce experience with accessible, cost-effective, equitable, and environmental excellence.

emmett.ahearn@dlrgroup.com



Michael Minton

AIA | Federal Client Leader, Principal

Michael is the primary DLR Group Federal Civilian/Non-Military client leader within the National Capital Region. He directly interfaces with contacts in OBO and across other Federal agencies to develop design solutions for domestic and international projects.

mminton@dlrgroup.com



Patrick Dugan

PE | Federal Client Leader, Principal

With 30 years experience in engineering and program management, Pat has led \$2 billion in military construction. Pat's prior leadership role with the U.S. Coast Guard Office of Civil Engineering informs his exceptional service and design solutions for our Federal clients.

pdugan@dlrgroup.com



Dan Sandall

Federal Business
Development Leader, Principal

Dan collaborates with key influencers and decision-makers throughout Civilian Federal project pursuits. He builds critical relationships between DLR Group, industry partners, and Federal clients to deliver projects for multiple clients.

dsandall@dlrgroup.com



In the Media

DLR Group Serves Multiple Federal Agencies on IDIQ Contracts

With more than 50 years of experience in IDIQ delivery, we can meet the needs of any federal agency.

[Learn More](#)

The Renwick Revisited

Explore the thoughtful renovation of the first purpose-built art museum in the United States.

[Learn More](#)

Peak Performance for a Historic Federal Building

This renovation project exemplifies how historic buildings are ripe for innovation.

[Learn More](#)

Global Impact, Diplomacy, and Stewardship

This mutli-phased renovation matched the mission of the agency, allowing for better collaboration to tackle critical global issues.

[Learn More](#)

Design as Service

DLR Group designers who draw from their time spent somewhere on the contiuum of service to our country.

[Learn More](#)

NIST Wing 5 Opens in Colorado

The historic federal lab and research facility reopens after undergoing extensive renovations.

[Learn More](#)

ELEVATE *the*
HUMAN EXPERIENCE
THROUGH DESIGN



[DLRGROUP.COM](https://www.dlrgroup.com) >